

## **STAT5b antibody**

**3014-2B**

### **Applications**

Western Blot  
Immunoprecipitation

### **Species cross reactivity**

Human, Mouse

### **Molecular weight**

90 kDa

### **Background**

A variety of cytokines and growth factors use the JAK–STAT (Signal transducers and activators of transcription) signalling pathway to transmit extracellular signals to the nucleus. STATs are transcriptional factors that are phosphorylated and activated by JAK kinases or by receptor tyrosine kinases, resulting in the formation of homo- or heterodimers that translocate to the cell nucleus. STATs serve important functions in regulating cell survival, proliferation, and differentiation. STAT5 is activated by a wide range of cytokines such as interleukins, GM-CSF, erythropoietin, growth hormone and prolactin. Constitutive STAT5 activation is observed in leukaemias and many solid tumours.

### **NCBI protein accession number**

P51692

### **Source and purification**

Polyclonal antibodies are produced by immunizing sheep with a synthetic peptide (KLH-coupled), followed by affinity purification.

### **Storage and use**

100 µg supplied as lyophilised protein in 10 mM sodium HEPES (pH 7.5), 150 mM NaCl, and 0.05 % sodium azide. Store at 4 °C. Reconstitute in 100 µl of sterile water.  
This product is for in vitro use only

*FOR RESEARCH USE ONLY*

**Symansis NZ Ltd**

26 Kennels Road, Washdyke,

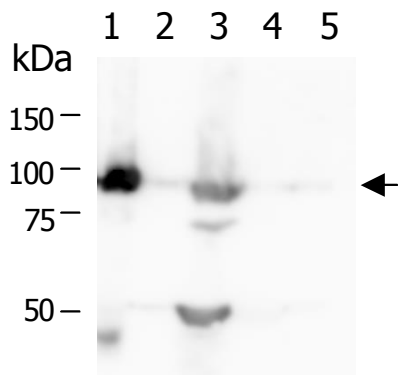
Timaru 7941,

New Zealand

[www.Symansis.com](http://www.Symansis.com)

### Recommended antibody dilutions

Immunoprecipitation: 5 µg/500 µg lysate



Lane 1: Immunoprecipitation of STAT5b in rat liver lysate using STAT5b Ab (Lot 7008.11) and protein G beads

Lane 2: Control using protein G beads alone

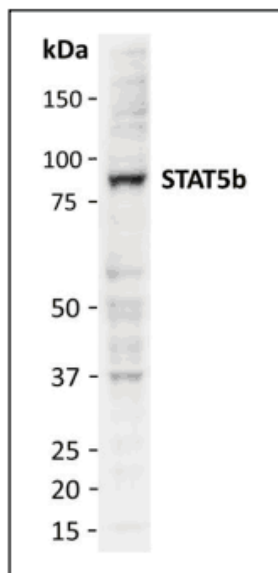
Lane 3: Lysate only

Lane 4: No Lysate

Lane 5: Control using lysate + beads, no antibody

(Western blot analysis performed using another commercially available STAT5b antibody)

Western Blot: 2 µg/mL



Western blot analysis of extracts from HeLa cells using STAT5b sheep antibody

*FOR RESEARCH USE ONLY*

**Symansis NZ Ltd**

26 Kennels Road, Washdyke,

Timaru 7941,

New Zealand

[www.Symansis.com](http://www.Symansis.com)