



EIF2 α antibody

3022

Applications

Immunoprecipitation
Western blot

Species cross reactivity

Human, Mouse

Molecular weight

40 kDa

Background

eIF2 α is ubiquitously expressed in many cell types and is one of the key molecules in the initiation of translation. Phosphorylation of eIF2 α at serine 52 blocks the GDP-GTP exchange activity of eIF2 β , resulting in the suppression of protein synthesis.

Immunogen

CAEEMEAKAED

NCBI protein accession number

P05198

Source and purification

Affinity purified sheep polyclonal antibody

Protocol

For Western blot analysis, block membrane with 5 % w/v milk, 1x TBS and 0.1% Tween-20 (TBST) for 30 min at room temperature and incubate with diluted antibody (in 1 % w/v BSA, TBST) at 4 °C overnight with gentle rocking.

For Immunoprecipitation, incubate 200 μ l of cell lysate with primary antibody at 4 °C overnight with gentle rocking. Add protein G agarose beads (20 μ l of 50% bead slurry) and incubate at 4 °C for 1-3 hours with gentle rocking. Centrifuge for 30 seconds at 4 °C. Wash pellet 5 times with 500 μ l of 1 x cell lysis buffer. Keep on ice during washes.



www.symansis.com

FOR RESEARCH USE ONLY

© 2008 Symansis

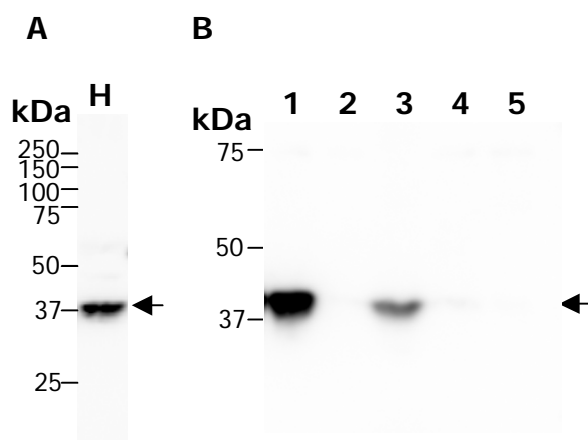


Storage and use

100 µg supplied as lyophilised protein in 10 mM sodium HEPES (pH 7.5), 150 mM NaCl, and 0.05 % sodium azide. Store at 4 °C. Reconstitute in 100 µl of sterile water. This product is for in vitro use only

Recommended antibody dilutions

Western blotting 2 µg/ml
Immunoprecipitation 5 µg/500 µg lysate



(A) Western blot analysis of extracts from HEK293 cells.

(B) Immunoprecipitation of eIF2 α Ab (Lot 7015.11; lane 1) with rat liver lysate using protein G beads, and controls using beads alone (lane 2), lysate alone (lane 3), beads + eIF2 α Ab Lot 7015.11 with no lysate (lane 4), and beads + lysate with no Ab (lane 5). Western blot analysis using another commercially available eIF2 α antibody.



www.symansis.com

FOR RESEARCH USE ONLY
© 2008 Symansis